

## R-731

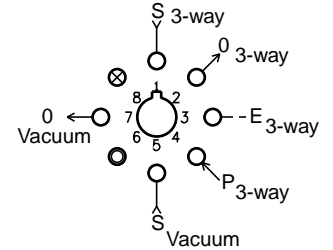
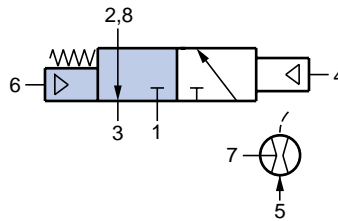


Modular Vacuum Generator

Turn pressure to vacuum generator on/off

**Features:**

- Indicator shows valve in shaded position
- Micro gap construction - snap action and no blow by



**Performance:**

**3-Way Valve**

Flow (SCFM @ 100 psig).....	9
Pilot pressure (psig) minimum.....	40
Temperature.....	32° to 180° F
Working pressure.....	0 to 150

**Vacuum Generator**

Vacuum (in. Hg@ 60 psig).....	25
Vacuum flow (scfm @ 60 psig).....	0.6
Air consumption (scfm @ 60 psig).....	1.7
Temperature.....	32° to 180° F

**Description:**

The R-731 is a combination venturi vacuum generator and an independent pilot actuated, spring return, fully ported 3-way valve. Applying pressure at port 5 creates a vacuum at port 7. The 3-way valve can be used to turn the vacuum generator on or off or it can be used to switch the vacuum on or off. 40 psig is required to pilot the 3-way valve.

For mounting and muffler information see page 247.

## R-732

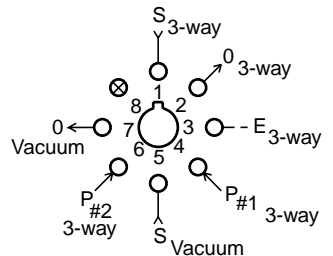
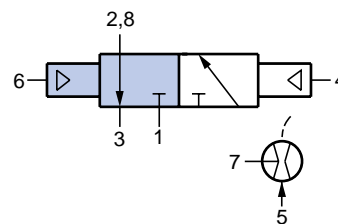


Modular Vacuum Generator

Select Pressure or Vacuum Output

**Features:**

- Indicator shows valve in shaded position
- Micro gap construction - snap action and no blow by



**Performance:**

**3-Way Valve**

Flow (SCFM @ 100 psig).....	9
Pilot pressure (psig) minimum.....	20
Temperature.....	32° to 180° F
Working pressure.....	0 to 150

**Vacuum Generator**

Vacuum (in. Hg@ 60 psig).....	25
Vacuum flow (scfm @ 60 psig).....	0.6
Air consumption (scfm @ 60 psig).....	1.7
Temperature.....	32° to 180° F

**Description:**

The R-732 is a combination venturi vacuum generator and an independent double pilot actuated, fully ported 3-way valve. Applying pressure at port 5 creates a vacuum at port 7. The 3-way valve can be used to turn the vacuum generator on or off or it can be used to switch the vacuum on or off. 20 psig is required to pilot the 3-way valve.

For mounting and muffler information see page 247.